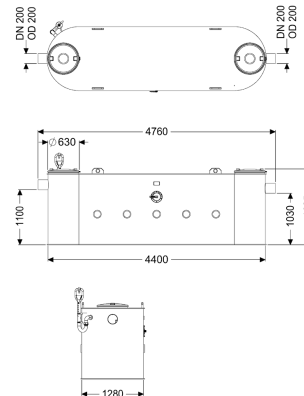


## Grease separator EasyClean free NS 20, Standard



### Article information

Item no.: 93020-06  
 GTIN: 4026092103067  
 Price group: 60

### Advantages

- Can be retrofitted up to Auto Mix & Pump
- Low-maintenance operation

### Description

The separator for greasy wastewater is suitable for free-standing set-up in frost-protected rooms and comes without metallic components in the tank. The collecting tank made of permanently resistant polymer (PE) is equipped with an integrated sludge trap and has slopes in the tank base for fast and clean disposal. Two odour-tight covers with quick-release closures make easy access possible for cleaning and maintenance work. Manual disposal is carried out with the tank open. 20 year polyethylene warranty.

#### Variant

Disposal variant:	Standard
Shredder-Mix-System:	no
Inspection window:	no
Nominal size (NS):	20
SonicControl:	no
Refill inlet in accordance with DIN 1988:	no
Type of disposal:	manual with suction hose
Load-bearing capacity (DIN 19901):	F3

#### General characteristics

Material:	PE
Standard:	EN 1825
Installation situation:	free-standing installation
Delivery state:	Installation-ready (connection parts must be connected on site)

#### Dimensions

Net weight:	407 kg
Gross weight:	407 kg
Diameter:	630 mm
Set-up area, length:	4760 mm
Set-up area, width:	1280 mm
Set-up area, height:	1625 mm
Required access area, length:	4760 mm
Required access area, width:	1280 mm
Required access area, height:	1625 mm
Length:	4760 mm
Width:	1600 mm
Height:	1625 mm
Packaging dimension:	length
Packaging dimension:	width
Packaging dimension:	height

#### Tank/drain body

Distance pipe bottom outlet to tank bottom:	1030 mm
Distance pipe bottom inlet to tank bottom:	1100 mm
Outlet nominal size (OD):	200 mm
Outlet nominal size (DN):	200 mm
Inlet nominal size (OD):	200 mm
Inlet nominal size (DN):	200 mm
Connection inlet/outlet sockets:	PE-HD pipes in accordance with DIN 19537, HT pipes in accordance with DIN 19560, PP or AS

#### Coverage features

Type of cover:	Cover
Cover material:	Polymer
Colour of cover:	black
Locking:	Quick-release closure
Tightness:	odour-tight

#### Wastewater contents

Separator contents:	2230 l
Total volume:	4230 l
Contents of sludge trap:	2000 l
Storage quantity of grease:	800 l

#### Control

Control unit:	no
---------------	----