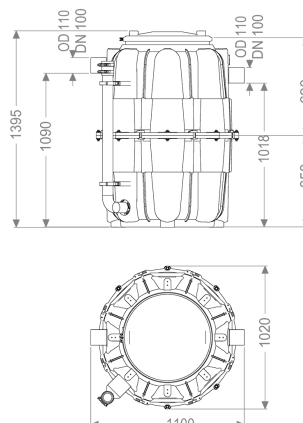


## Grease separat. EasyClean Modular free, NS 3, round, Direct disposal



### Article information

Item no.: 93003.00/D1-R

GTIN: 4026092103654

Price group: 60

### Advantages

- Ideal where access is tight
- can be divided into 3 parts for insertion, for an insertion opening of max. 66 cm
- Direct disposal with the tank closed

### Description

The separator for greasy wastewater is suitable for free-standing set-up in frost-protected rooms and comes without metallic components in the tank. Thanks to the modular design, the separator can be inserted even where access is extremely tight. The collecting tank made of permanently resistant polymer (PE) is equipped with an integrated sludge trap. A service access cover with odour-tight cover and quick-release closures makes easy access possible for cleaning and maintenance work. A direct disposal pipe socket is available for odour-reduced manual disposal. 20 year polyethylene warranty.

#### Variant

Chamber system:	two-piece chamber
Disposal variant:	Direct
Nominal size (NS):	3
Disposal system:	Disposal connection
Type of disposal:	manual

#### General characteristics

Material:	PE
Standard:	EN 1825
Installation situation:	free-standing installation
Delivery state:	Installation-ready (connection parts must be connected on site)
Scope of delivery:	Storz-B coupling R 2 1/2" for disposal vehicle connection

#### Dimensions

Net weight:	60 kg
Gross weight:	60 kg
Set-up area, height:	1395 mm
Required access area, length:	1020 mm
Required access area, width:	1100 mm
Required access area, height:	690 mm
Packaging dimension:	length
Packaging dimension:	width
Packaging dimension:	height

#### Tank/drain body

Outlet nominal size (DN):	100 mm
Inlet nominal size (DN):	100 mm

#### Coverage features

Type of cover:	Cover
Locking:	Quick-release closure
Tightness:	odour-tight

#### Wastewater contents

Separator contents:	300 l
Contents of sludge trap:	300 l