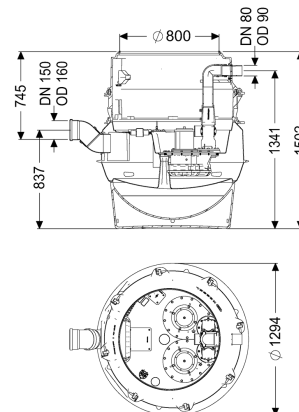


## Pumping station Aquapump XL Duo, SPF 1500-S3, D0



### Article information

Item no.: 8742017  
 GTIN: 4026092069530  
 Price group: 60

### Advantages

- Maximum safety
- Flexible installation
- Hygienic advantages for maintenance and repair

### Description

The pumping station for wastewater with and without sewage is equipped with one or two submersible pumps, a backflow preventer and a shut-off valve for the pressure pipe. The collection tank made of permanently resistant polymer (PE) has a closed pump tank (dry installation) with a screwed-on access cover. The station is controlled by a user-friendly control unit, which is optionally integrated in the building management system via a potential-free contact. Alternatively, alarm and collective fault messages can be output via a GSM interface. The KESSEL modular system provides different upper sections and engineering chamber options as accessories.

#### Variant

Note on installation depth:  
 Type of system:  
 Shut-off valve:  
 Access steps:  
 Installation:  
 Pump control:  
 Backflow preventer:  
 Pressure pipe connection:

Version with lowest installation height  
 duo pump  
 Shut-off valve made of polymer  
 yes  
 Dry installation  
 Control unit  
 integrated  
 horizontal

#### General characteristics

Colour: black  
 Standard: EN 12050-1  
 Type of wastewater: with sewage

|                                                        |                                                                                                                            |
|--------------------------------------------------------|----------------------------------------------------------------------------------------------------------------------------|
| Installation situation:                                | underground installation                                                                                                   |
| Delivery state:                                        | Pre-mounted for final assembly on site (pumps and sensor system must be fitted on site and control unit must be connected) |
| System type:                                           | Duo                                                                                                                        |
| Dimensions                                             |                                                                                                                            |
| Net weight:                                            | 204 kg                                                                                                                     |
| Gross weight:                                          | 227 kg                                                                                                                     |
| Groundwater resistant from lower edge of base section: | 3000 mm                                                                                                                    |
| Length:                                                | 1295 mm                                                                                                                    |
| Width:                                                 | 1295 mm                                                                                                                    |
| Height:                                                | 1500 mm                                                                                                                    |
| Packaging dimension:                                   | length                                                                                                                     |
| Packaging dimension:                                   | width                                                                                                                      |
| Packaging dimension:                                   | height                                                                                                                     |
| Tank/drain body                                        |                                                                                                                            |
| Pressure pipe connection (DN):                         | 80                                                                                                                         |
| Pressure pipe connection (OD):                         | 90 mm                                                                                                                      |
| Venting connection (DN):                               | 70                                                                                                                         |
| Distance from centre of outlet pipe to tank bottom:    | 1343 mm                                                                                                                    |
| Distance pipe bottom inlet to tank bottom:             | 753 mm                                                                                                                     |
| Distance from centre of inlet pipe to tank bottom:     | 833 mm                                                                                                                     |
| Distance from inlet pipe invert to top of tank:        | 747 mm                                                                                                                     |
| Inlet nominal size (OD):                               | 160 mm                                                                                                                     |
| Inlet nominal size (DN):                               | 150 mm                                                                                                                     |
| Number of inlets:                                      | 1                                                                                                                          |
| Clear width of tank (LW):                              | 1000 mm                                                                                                                    |
| Clear width of entry (LW):                             | 800 mm                                                                                                                     |
| Pumping volume:                                        | 160 l                                                                                                                      |
| Tank volume:                                           | 335 l                                                                                                                      |
| Pumping device                                         |                                                                                                                            |
| Pump:                                                  | SPF 1500-S1                                                                                                                |
| Number of pumps:                                       | 2                                                                                                                          |
| Weight, pump:                                          | 24 kg                                                                                                                      |
| Connection type:                                       | Direct connection                                                                                                          |
| Protection class:                                      | I                                                                                                                          |
| Insulation class:                                      | F                                                                                                                          |
| Cos phi - power factor:                                | 0,77                                                                                                                       |
| Protection class (pump):                               | IP 68 (3m/48h)                                                                                                             |
| Temperature monitoring:                                | integrated                                                                                                                 |
| Max. temperature (permanent) of conveyed material:     | 40 °C                                                                                                                      |
| Max. pumping capacity:                                 | 40 m³/h                                                                                                                    |
| Max. pumping height:                                   | 8 m                                                                                                                        |

|                                 |                                |
|---------------------------------|--------------------------------|
| Speed:                          | 1415 U/min                     |
| Power P1:                       | 1,4 kW                         |
| Power P2:                       | 1,1 kW                         |
| Operating mode:                 | S3 - 50 %                      |
| Type of pump connection cable:  | H07RN-F 7G 1.5 mm <sup>2</sup> |
| Impeller type:                  | Multi-vane impeller            |
| Free passage:                   | 40 mm                          |
| Length of mains cable for pump: | 10 m                           |
| Rated current:                  | 2,7 A                          |

|                                |                   |
|--------------------------------|-------------------|
| Control                        |                   |
| Control unit:                  | Comfort           |
| Motor protection switch:       | yes               |
| Alarm sensor:                  | Immersion pipe    |
| Level measurement instrument:  | Immersion pipe    |
| Type of level measurement:     | pneumatic         |
| Protection class control unit: | IP 54             |
| Operating voltage:             | 400 V             |
| Connection type:               | Direct connection |
| Potential-free contact:        | yes               |
| GSM interface:                 | yes               |
| Log book function:             | yes               |
| Multi-line display:            | yes               |
| Battery buffering:             | yes               |
| Self-diagnosis system (SDS):   | yes               |