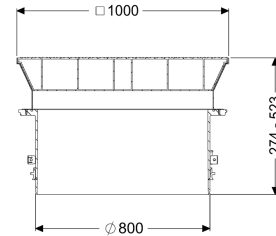
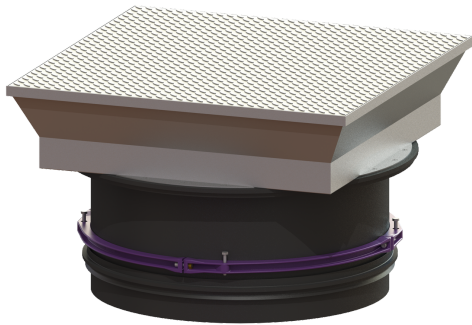


## Upper section with cover plate LW 800, Class B



### Article information

Item no.: 8740179  
 GTIN: 4026092070451  
 Price group: 60

### Description

Upper section for continuous height and level compensation for chamber module LW 1000, consisting of a flush-to-ground cover for setting in concrete, with inner joints, all-round frost- and weather-proof seal, gas spring as an opening aid incl. self-effective arresting device. Suitable for taper with 800 mm access.

#### General characteristics

Colour:	black
Material:	Polymer

#### Dimensions

Net weight:	132,37 kg
Gross weight:	150,1 kg
Clear width (LW):	800 mm
Adjustment range:	274 - 523
Packaging dimension:	length
Packaging dimension:	width
Packaging dimension:	height

#### Coverage features

Type:	surface water resistant
Surface:	Stainless steel
Locking:	screwed
Load class:	B 125 (EN 124)