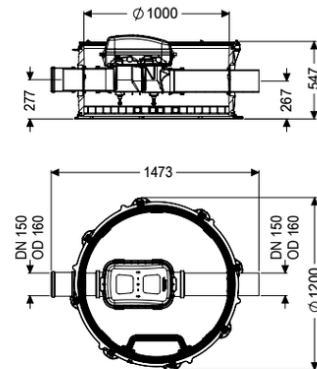


Controfix backwater tech. mod. DN 150, closed channel passage



Article information

Item no.: 851501
 GTIN: 4026092079393
 Price group: 60

Advantages

- Komfort: expensive living or useful space is not lost
- No system noises or unpleasant odours and soiling in the building
- Straightforward installation thanks to low weight of the combined engineering chamber modules and variable upper sections for adaptation to the ground level

Description

The backwater technical module is equipped with an integrated clean out Controfix and access steps. Thanks to the modular KESSEL system, the clean out can easily be converted to a Staufix SWA Premium backwater valve, Staufix FKA or Pumpfix F backwater pumping station.

Variant

Sound absorption mat:

modular chamber

General characteristics

Colour:

black

Material:

PE-HD

Type of wastewater:

with sewage

Installation situation:

underground installation

Delivery state:

Installation-ready (connection parts must be connected on site)

Inlet max. scoring (DN):

Z-42.1-527

Dimensions

Net weight:

64 kg

Gross weight:

82 kg

| | |
|--|--------------------|
| Groundwater resistant from lower edge of base section: | 3000 mm |
| Vertical drop between inlet and outlet: | 9 mm |
| Width: | 1200 mm |
| Height: | 520 mm |
| Packaging dimension: | length |
| Packaging dimension: | width |
| Packaging dimension: | height |
| Tank/drain body | |
| Channel: | continuous channel |
| Tank width max.: | 1390 mm |
| Distance from centre of outlet pipe to tank bottom: | 267 mm |
| Distance from centre of inlet pipe to tank bottom: | 277 mm |
| Number of outlets: | 1 |
| Outlet nominal size (DN): | 150 mm |
| Inlet nominal size (DN): | 150 mm |
| Inlet type: | 1 |
| Clear width of tank (LW): | 1000 mm |