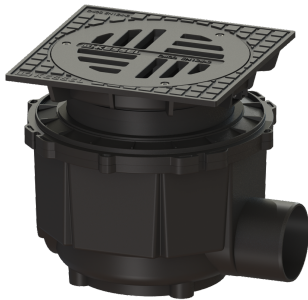


Yard drain System 400, DN 150, D, 380 - 510 mm



Article information

Item no.: 851150D
 GTIN: 4026092004364
 Price group: 10

Advantages

- Different load classes available
- Height-adjustable complete system
- Easy underground installation

Description

The polymer yard drain is used for point drainage and is resistant to aggressive wastewater. It is equipped with a sludge bucket and fuel resistant seals. The polymer upper section enables continuous height and level adjustment.

Variant	
System:	400
Heating:	without
Contents of sludge trap:	yes
Discharge rate (l/s) with 20 mm threshold:	4,5

General characteristics	
Colour:	black
Standard:	EN 752
Nominal size (DN):	150
Outer diameter (OD):	160 mm
Odour trap:	no

Dimensions	
Net weight:	39 kg
Gross weight:	45 kg
Groundwater resistant from lower edge of base section:	500 mm
Cutout dimension, width:	535 mm
Cutout dimension, length:	585 mm
Min. insertion depth:	55 mm
Installation depth:	380 - 510 mm
Type of height adjustability:	vertically adjustable upper section
Packaging dimension:	length
Packaging dimension:	width
Packaging dimension:	height

Tank/drain body	
Number of outlets:	1
Material of drain body:	Polymer
Socket version:	lateral
Coverage features	
Type of cover:	Round slotted cover
Cover material:	Grey iron
Colour of cover:	black
Width of cover:	450 mm
Length of cover:	450 mm
Surface:	EDM
Load class:	D 400 (EN 124)
Rim width:	450 mm
Rim length:	450 mm
Shape of upper section:	square
Contents of sludge trap:	yes