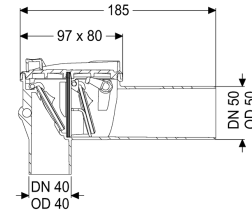
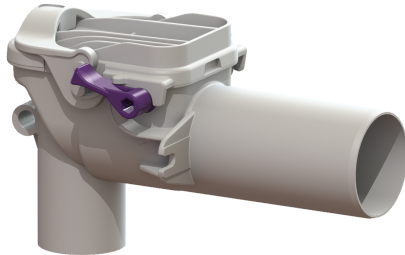


Backwater valve Staufix Siphon, DN 50, Sink, Type 5



Article information

Item no.: 73051
 GTIN: 4026092027400
 Price group: 10

Advantages

- Ideal for modernisation: can also be installed in existing pipes later
- Simple, toolless maintenance and cleaning
- Corrosion-free

Description

The backwater valve for wastewater without sewage is equipped with two mechanical flaps which close automatically in the event of backwater. One flap serves at the same time as an emergency closure to be closed by hand.

Variant

| | |
|-----------------------------|-----|
| Emergency closure: | yes |
| Mechanical backwater flaps: | 2 |

General characteristics

| | |
|-------------------------|-----------------------------|
| Colour: | white |
| Standard: | EN 13564 |
| Nominal size (DN): | 50 |
| Type of wastewater: | without sewage |
| Installation situation: | installation as sink siphon |
| Delivery state: | installation-ready |
| Backwater protection: | Type 5 |

Dimensions

| | |
|----------------------|---------|
| Net weight: | 0,25 kg |
| Gross weight: | 0,29 kg |
| Length: | 183 mm |
| Width: | 80 mm |
| Height: | 110 mm |
| Packaging dimension: | length |

Packaging dimension:
Packaging dimension:

width
height

Coverage features
Cover locking:

One-handed closure