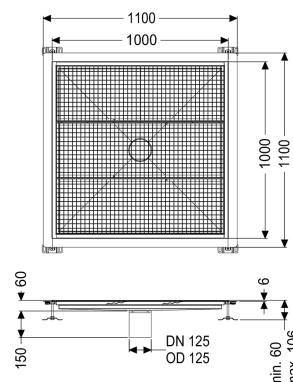
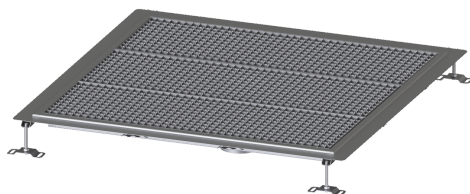


Floor Tray Ferrofix glued flange H: 6mm, 1000x1000mm



Article information

Item no.: 6200100
GTIN: 4026092099360
Price group: 80

Advantages

- Made of particularly a hygienic and mechanically highly resistant stainless steel
- Variably combinable with suitable drain bodies

Description

The Ferrofix floor tray made of stainless steel with a material thickness of 1.5 mm (pickled in the immersion bath) is equipped with ground crosspieces, longitudinal and transverse gradients, feet for height adjustment and stainless steel outlet nozzles. The channel profile is suitable for thin-layered floorings (e.g. epoxy resin) and has an all-round adhesive rim (6 mm deep and 50 mm folded outwards) with welded mitres. The glued flange is also suitable for connecting waterproofing.

Variant

Waterproofing layer on the upper section: Adhesive flange (suitable for moisture barriers)

General characteristics

Nominal size (DN): 125
Outer diameter (OD): 125 mm
Glued flange height: 6 mm

Dimensions

Net weight: 43 kg
Gross weight: 43 kg
Length: 1000 mm
Width: 1000 mm
Height: 60 mm

Coverage features

Type of cover: Slotted cover
Colour of cover: silver

Locking:	placed
Load class:	L 15 (EN 1253-1)
Slip resistance class:	R12 according to DIN 51130; C according to DIN 51097
Upper section material:	Stainless steel 14301