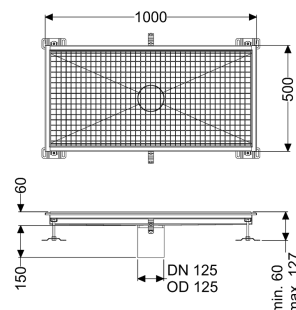
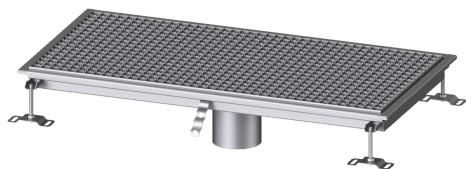


## Floor Tray Ferrofix without glued flange, 500x1000mm



### Article information

Item no.: 6150100  
GTIN: 4026092099391  
Price group: 80

### Advantages

- Made of particularly a hygienic and mechanically highly resistant stainless steel
- Variably combinable with suitable drain bodies

### Description

The Floor tray Ferrofix made of stainless steel with a material thickness of 2.0 mm (pickled in the immersion bath) is equipped with polished visible ridges, longitudinal and transverse slopes, feet for height adjustment and stainless steel outlet nozzles.

#### Variant

Waterproofing layer on the upper section:

Connection flange

#### General characteristics

Nominal size (DN):

125

Outer diameter (OD):

125 mm

#### Dimensions

Length:

1000 mm

Width:

500 mm

Height:

60 mm

#### Coverage features

Type of cover:

Slotted cover

Colour of cover:

silver

Locking:

placed

Load class:

L 15 (EN 1253-1)

Slip resistance class:

R12 according to DIN 51130; C according to DIN 51097

Upper section material:

Stainless steel 14301