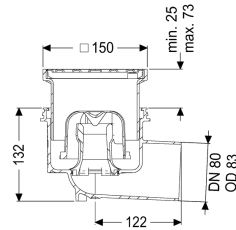


Ecoguss project drain DN 80, horizontal, Slotted cover



Article information

Item no.: 48383.11
 GTIN: 4026092034309
 Price group: 40

Advantages

- High-tech Ecoguss composite material
- Highest fire protection standards
- Scientifically confirmed sound protection effect

Description

The Ecoguss project drain with connection flange is used for point drainage and is equipped with a removable odour trap as well as a lip seal and a temporary protective cover. The recyclable composite material Ecoguss meets the highest noise protection requirements, is temperature-resistant, resistant to aggressive media, and has a permanently corrosion-free surface. It is also briefly flammable from 100 to 400 degrees Celsius. The outlet socket is suitable for connection to SML cast iron pipes. Separate equipotential bonding is not necessary.

Variant

| | |
|---|-------------------|
| System: | 125 |
| Waterproofing layer on the upper section: | Connection flange |
| Waterproofing layer on the drain body: | Connection flange |
| Sealing water height: | 50 mm |

General characteristics

| | |
|----------------------|-----------|
| Standard: | EN 1253-1 |
| Nominal size (DN): | 80 |
| Outer diameter (OD): | 83 mm |
| Odour trap: | included |

Dimensions

| | |
|-------------------------------|-------------------------------------|
| Net weight: | 1,35 kg |
| Gross weight: | 1,6 kg |
| Type of height adjustability: | vertically adjustable upper section |
| Packaging dimension: | length |

| | |
|-------------------------|-----------------------|
| Packaging dimension: | width |
| Packaging dimension: | height |
| Tank/drain body | |
| Number of outlets: | 1 |
| Material of drain body: | Ecoguss resistant |
| Socket version: | lateral |
| Coverage features | |
| Type of cover: | Slotted cover |
| Cover material: | Stainless steel 14301 |
| Colour of cover: | silver |
| Width of cover: | 138 mm |
| Height of cover: | 16 mm |
| Length of cover: | 138 mm |
| Frame material: | ABS |
| Locking: | screwed |
| Load class: | K 3 (EN 1253-1) |
| Rim width: | 150 mm |
| Rim length: | 150 mm |
| Max. flooring height: | 25 mm |
| Upper section: | vertically adjustable |
| Upper section material: | ABS |