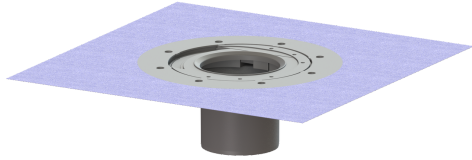


## Intermediate section with system 100 glued flange



### Article information

Item no.: 47900  
 GTIN: 4026092034194  
 Price group: 10

### Description

KESSEL intermediate section with glued flange 120 mm  
 System 100 made of ABS, for alternative waterproofing (seal composite) for natural stone coverings such as marble or granite, can be combined with all KESSEL upper sections System 100 (accessories), laterally adjustable to adapt to the tile grid, with construction period protection cover. Overall height:

Variant  
 System: 100

Dimensions  
 Net weight: 0,94 kg  
 Gross weight: 1,18 kg  
 Diameter: 312 mm  
 Length: 312 mm  
 Width: 312 mm  
 Height: 120 mm  
 Packaging dimension: length  
 Packaging dimension: width  
 Packaging dimension: height