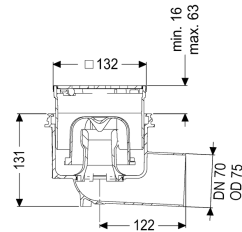


## Practicus floor/roof drain DN 70, horizontal, Design grating



### Article information

Item no.: 45170.63  
 GTIN: 4026092052754  
 Price group: 10

### Advantages

- Hygiene: hygienic, absolutely corrosion-free and durable material
- Sound insulation: outstanding sound insulation effect confirmed by the Fraunhofer Institute

### Description

The Practicus floor drain is used for point drainage and is equipped with a connection flange as well as a removable odour trap, a lip seal and a temporary protective cover. Including telescopic height-adjustable upper section made of ABS. The drain meets particular sound insulation requirements in accordance with the measurements of the Fraunhofer Institute in Stuttgart. The outlet socket is suitable for connection to SML cast iron pipes. With connection option for equipotential bonding.

#### Variant

System:	125
Waterproofing layer on the upper section:	Connection flange
Waterproofing layer on the drain body:	Connection flange
Sealing water height:	50 mm
Discharge rate (l/s) with 20 mm threshold:	1,4

#### General characteristics

Standard:	EN 1253-1
Nominal size (DN):	70
Outer diameter (OD):	75 mm
Odour trap:	included
Sustainable:	through the use of recycled material

#### Dimensions

Net weight:	1,38 kg
-------------	---------

Gross weight:	1,75 kg
Cutout dimension, width:	180 mm
Cutout dimension, length:	220 mm
Type of height adjustability:	vertically adjustable upper section
Packaging dimension:	length
Packaging dimension:	width
Packaging dimension:	height
Tank/drain body	
Number of outlets:	1
Material of drain body:	PP
Socket version:	lateral
Coverage features	
Type of cover:	Design cover
Cover material:	Stainless steel 14301
Colour of cover:	silver
Width of cover:	120 mm
Height of cover:	16 mm
Length of cover:	120 mm
Surface:	ground
Frame material:	Stainless steel 14301
Locking:	Lock & Lift
Load class:	L 15 (EN 1253-1)
Grating design:	Kessel
Slip resistance class:	R9 according to DIN 51130; C according to DIN 51097
Rim width:	132 mm
Rim length:	132 mm
Upper section:	vertically adjustable
Shape of upper section:	square
Upper section material:	ABS