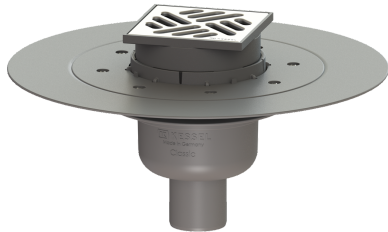


## Classic bathroom drain glued fl. DN 50, vertical, Slotted grating, K 3



### Article information

Item no.: 40250.90  
GTIN: 4026092029459  
Price group: 10

### Advantages

- Odour trap height: 50 mm
- Lip seal fixed on the drain body
- System 100 - modular design

### Description

The Classic bathroom drain is suitable for indoor floor drainage. The drain made of ABS is equipped with a telescopic, height-adjustable upper section made of polymer, a removable odour trap as well as a secure, reliably installed seal. Including glued flange and mating flange for clamping PVC sheeting (vapour barriers) or for alternative waterproofing layers (additional honeycomb fabric required).

#### Variant

|  |  |
|--|--|
| Waterproofing layer on the upper section:                                | Adhesive flange (suitable for moisture barriers) |
| Waterproofing layer on the drain body:                                   | Adhesive flange (suitable for moisture barriers) |
| Water exposure class in accordance to DIN 18534-1 (up to and including): | W3-I   |
| Sealing water height:  | 50 mm  |
| Discharge rate (l/s) with 20 mm threshold:                               | 0,8  |

#### General characteristics

|                      |           |
|----------------------|-----------|
| Standard:            | EN 1253-1 |
| Nominal size (DN):   | 50        |
| Outer diameter (OD): | 50 mm     |
| Odour trap:          | included  |

#### Dimensions

|                               |                                     |
|-------------------------------|-------------------------------------|
| Vertical adjustment:          | 20 - 60 mm                          |
| Net weight:                   | 0,55 kg                             |
| Gross weight:                 | 0,91 kg                             |
| Cutout dimension, width:      | 350 mm                              |
| Cutout dimension, length:     | 350 mm                              |
| Type of height adjustability: | vertically adjustable upper section |
| Length:                       | 332 mm                              |
| Width:                        | 332 mm                              |
| Packaging dimension:          | length                              |

|                         |                       |
|-------------------------|-----------------------|
| Packaging dimension:    | width                 |
| Packaging dimension:    | height                |
| Tank/drain body         |                       |
| Number of outlets:      | 1                     |
| Material of drain body: | ABS                   |
| Socket version:         | vertical              |
| Coverage features       |                       |
| Type of cover:          | Slotted cover         |
| Cover material:         | Stainless steel 14301 |
| Colour of cover:        | silver                |
| Width of cover:         | 100 mm                |
| Length of cover:        | 100 mm                |
| Frame material:         | ABS                   |
| Locking:                | placed                |
| Load class:             | K 3 (EN 1253-1)       |
| Rim width:              | 107 mm                |
| Rim length:             | 107 mm                |
| Shape of upper section: | square                |
| Upper section material: | ABS                   |