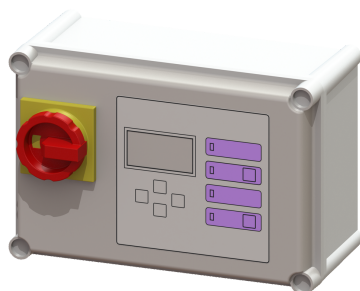


## Comfort control unit 400V, Aqualift Mono, 4.0-6.3 A



### Article information

Item no.: 28756  
 GTIN: 4026092055014  
 Price group: 20

### Advantages

- Self-diagnosis system (SDS)
- Potential-free contact for faults/warnings
- Reminder for when maintenance is due

### Description

Komfort control unit for lifting stations or pumping stations. Suitable for 400 V single stations. Optional connection option for float switches, conductivity probes and level probe on the terminal strip. User-friendly menu navigation in multi-line display. Menu navigation in six languages. Simple selection of the system to be connected with preset, system-specific operating parameters. Display of the current measured values. Simple adjustment of the function-related parameters, with integrated operating hour counter. With self-diagnosis system (SDS) for monitoring pump, sensors and battery back-up. Improper installation or operating faults trigger an optical and acoustic alarm signal. Forwarding of a collective fault and alarm signals via optional potential-free contact or integrated serial interface for GSM modem.

|                 |             |
|-----------------|-------------|
| Variant         |             |
| Series:         | ab 03/2010  |
| Type of system: | Single unit |

|                         |      |
|-------------------------|------|
| General characteristics |      |
| Colour:                 | grey |
| System type:            | Mono |

|                      |         |
|----------------------|---------|
| Dimensions           |         |
| Net weight:          | 2,47 kg |
| Gross weight:        | 3,19 kg |
| Packaging dimension: | length  |
| Packaging dimension: | width   |
| Packaging dimension: | height  |

|                                |         |
|--------------------------------|---------|
| Control                        |         |
| Control unit:                  | Comfort |
| Motor protection switch:       | yes     |
| Protection class control unit: | IP 54   |

|                              |           |
|------------------------------|-----------|
| Operating voltage:           | 400 V     |
| Potential-free contact:      | yes       |
| GSM interface:               | yes       |
| USB interface:               | no        |
| Log book function:           | yes       |
| Multi-line display:          | yes       |
| Battery buffering:           | yes       |
| Self-diagnosis system (SDS): | yes       |
| Rated current:               | 4 - 6,3 A |