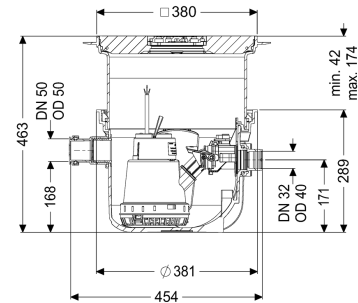


Lifting station Minilift L KTP 300, resistant, Floor slab, black



Article information

Item no.: 280570SC
GTIN: 4026092093511
Price group: 20

Advantages

- Space-saving installation in the floor slab with integrated drainage function
- System ready to plug in
- Easy tool-free maintenance

Description

The ready to plug in small lifting station for faecal-free wastewater is suitable for wastewater drainage of individual sanitary appliances. The submersible pump with float switch can be removed easily with the help of one-handed closures. The collection tank made of polymer (PE) has an open pump tank and is resistant to aggressive wastewater. The system for installation in the floor slab is preassembled for final installation on site.

Variant

Type of system:
Resistant:

Single unit
Resistant to waste water containing salt, softener and condensate
Float switch
integrated

Pump control:
Backflow preventer:

General characteristics

Colour:
Standard:
Type of wastewater:
Installation situation:
Delivery state:

grey
EN 12050-2
without sewage
floor slab installation
Installation-ready (connection parts must be connected on site)

Dimensions

Net weight: 10,8 kg

Gross weight:	11,8 kg
Installation depth:	330 - 460 mm
Type of height adjustability:	vertically adjustable upper section
Length:	460 mm
Width:	380 mm
Packaging dimension:	length
Packaging dimension:	width
Packaging dimension:	height

Tank/drain body	
Pressure pipe connection (DN):	32
Pressure pipe connection (OD):	40 mm
Inlet nominal size (DN):	50 mm
Pumping volume:	7 l
Tank volume:	26 l

Coverage features

Type of cover:	Cover plate with slotted cover
Cover material:	Polymer
Colour of cover:	black
Width of cover:	366 mm
Length of cover:	366 mm
Locking:	Lock & Lift
Load class:	K 3 (EN 1253-1)

Pumping device

Pump:	KTP 300 resistant
Number of pumps:	1
Weight, pump:	4 kg
Connection type:	Schuko (earthed contact) 2-pin
Protection class:	I
Insulation class:	F
Protection class (pump):	IP 68 (3m)
Temperature monitoring:	integrated
Max. temperature (permanent) of conveyed material:	40 °C
Hot water resistance for a short time (2 min):	80 °C
Max. pumping capacity:	8 m³/h
Max. pumping height:	6 m
Speed:	2800 U/min
Power P1:	0,34 kW
Power P2:	0,21 kW
Operating mode:	S1
Type of pump connection cable:	H07RN-F 3G 1.5 mm²
Impeller type:	Multi-vane impeller
Free passage:	10 mm
Type of fuse required (pump):	C 16 A
Length of mains cable for pump:	5 m
Rated current:	1,6 A

Control

Motor protection switch:

yes

Level measurement instrument:

Float switch

Type of level measurement:

mechanical

Mains frequency:

50 Hz

Operating voltage:

230 V

Connection type:

Schuko (earthed contact) 2-pin