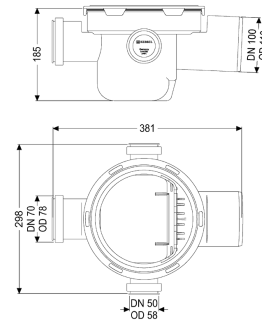
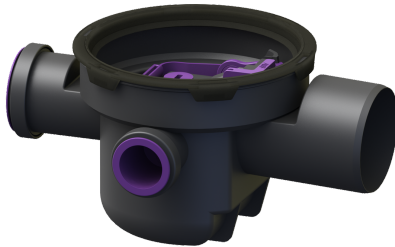


Drain body The Universal DN 100, 3 inlets, w. backwater valve



Article information

Item no.: 27600
GTIN: 4026092085141
Price group: 10

Advantages

- Flexible installation: vertically adjustable upper section rotatable
- Integrated backwater protection
- vertically adjustable

Description

The polymer drain body is equipped with a removable backwater valve with two backwater flaps, one hand-lockable emergency closure and a sludge bucket. The drain body also has two inlets DN 50 and one inlet DN 70 with blind plug. Material:

PP

Variant

Sealing water height: 60 mm
Mechanical backwater flaps: 2

General characteristics

Colour: black
Standard: EN 1253-1
Nominal size (DN): 100
Outer diameter (OD): 110 mm
Type of wastewater: without sewage
Installation situation: floor slab installation
Backwater protection: Type 5
Odour trap: included
Sustainable: through the use of recycled material

Dimensions

Net weight: 2,31 kg

| | |
|-------------------------|---------|
| Gross weight: | 2,31 kg |
| Length: | 380 mm |
| Width: | 285 mm |
| Height: | 190 mm |
| Packaging dimension: | length |
| Packaging dimension: | width |
| Packaging dimension: | height |
| | |
| Tank/drain body | |
| Material of drain body: | PP |
| Socket version: | lateral |