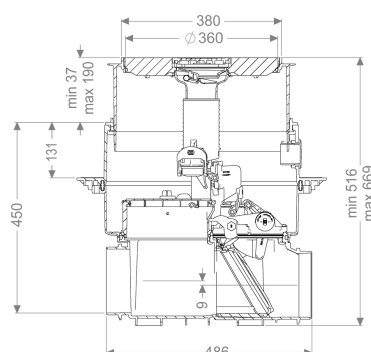


## Shell Kit for Pumpfix F, without nozzles, bl.cover



### Article information

Item no.: 24000S-RBK

GTIN: 4026092097069

Price group: 30

### Description

KESSEL shell kit for Pumpfix F, without sockets, black cover

Shell kit consisting of a drain body, upper section and flange for joint sealing. The inlet and outlet sockets are not included.

For combination with a KESSEL technology kit for creating a Pumpfix F backwater pumping station.

#### General characteristics

Colour:	black
Type of wastewater:	with sewage
Installation situation:	floor slab installation
Delivery state:	Pre-mounted for final assembly on site (pumps and sensor system must be fitted on site and control unit must be connected)
Approval:	Z-53.2-388
Motor type:	KSM 140
Type de protection moteur:	IP 68 (3m/48h)

#### Dimensions

Net weight:	15,2 kg
Gross weight:	18 kg
Groundwater resistant from lower edge of base section:	3000 mm
Cutout dimension, width:	750 mm

Cutout dimension, length:	750 mm
Vertical drop between inlet and outlet:	9 mm
Installation depth:	516 - 669 mm
Type of height adjustability:	vertically adjustable upper section
Packaging dimension:	length
Packaging dimension:	width
Packaging dimension:	height

Tank/drain body	
Socket version:	optional

Coverage features	
Type of cover:	Cover plate with slotted cover
Cover material:	Polymer
Colour of cover:	black
Width of cover:	366 mm
Length of cover:	366 mm
Drainage function:	yes
Locking:	Lock & Lift
Load class:	L 15 (EN 1253-1)

: