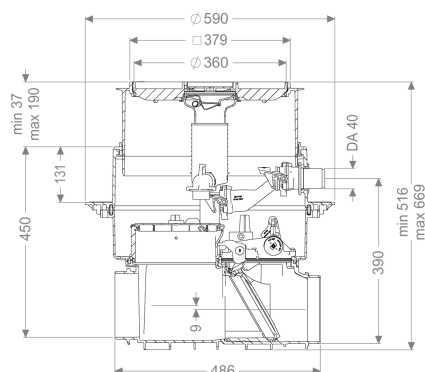


## Shell Kit for Ecolift, w/o socket, tileable



### Article information

Item no.: 21000X-RBK

GTIN: 4026092097120

Price group: 20

### Description

KESSEL shell kit for Ecolift, without sockets, tileable

Shell kit consisting of a drain body, upper section and flange for joint sealing. The inlet and outlet sockets are not included.

For combination with a KESSEL technology kit for creating an Ecolift backwater lifting station.

#### General characteristics

Colour:	black
Type of wastewater:	with sewage
Installation situation:	floor slab installation
Delivery state:	Pre-mounted for final assembly on site (pumps and sensor system must be fitted on site and control unit must be connected)
Approval:	Z-53.2-487
Motor type:	KSM 140
Type de protection moteur:	IP 68 (3m/48h)

#### Dimensions

Net weight:	25 kg
Gross weight:	30,5 kg
Groundwater resistant from lower edge of base section:	3000 mm
Installation depth:	516 - 669 mm

Type of height adjustability:	vertically adjustable upper section
Length:	590 mm
Width:	590 mm
Packaging dimension:	length
Packaging dimension:	width
Packaging dimension:	height

Tank/drain body	
Nominal pressure (PN):	6
Pressure pipe connection (OD):	40 mm
Socket version:	optional

Coverage features	
Type of cover:	tileable cover plate
Cover material:	Polymer
Width of cover:	366 mm
Length of cover:	366 mm
Drainage function:	yes
Locking:	Lock & Lift
Load class:	K 3 (EN 1253-1)
Max. flooring height:	16 mm

: